



# IN THIS ISSUE

BOARD OF DIRECTORS	PAGE 2
MEETINGS CALENDAR	PAGE 3
PRESIDENT'S REPORT	PAGE 4
VP TECHNICAL REPORT	PAGE 6
VP MEMBERSHIP REPORT	PAGE 8
VP LEGISLATIVE REPORT	PAGE 10

**DON'T MISS OUR NEW LOCATION!**

details below!

## YOUR CHANCE TO WIN!!!

**TWO (2) RAFFLE TICKETS\* FOR \$50 FOR ALL ATTENDING ENGINEERS!**

\*Pre-registered guests will receive an extra ticket upon arrival.



### NEXT MTG.

Date	March 10, 2026
Topic	Fire Protection and Firefighting Operations
	E.J. Henninger with PM Group

# CASPE

American Society of Plumbing Engineers™

## WASHINGTON, DC

### MEETING FORMAT

5:30 - 6:30PM	Social
6:30 - 6:45PM	Dinner Buffet
6:45 - 6:50PM	Announcements
6:50 - 7:00PM	Tabletops
7:00 - 8:00PM	Presentation

[Register Today](#)

## NOT A MEMBER?

CLICK THE LINK BELOW TO JOIN TODAY

[New ASPE Member](#)

**NEW  
NEW  
NEW  
NEW**

### MEETING LOCATION PINSTRIPES

11920 Grand Park Ave  
North Bethesda  
MD 20852



# MEET *the* BOARD



**Chuck Potter**  
President



**Tyler Simms**  
VP Technical



**Ameen Osman**  
VP Legislative



**Michelle Stilley**  
VP Membership



**David Bailey**  
Education Chair



**Antrone Winkey**  
Administrative Secretary



**Joe Niedzielski**  
Treasurer



**Michael Kruger**  
Web Master



**Ro Pamidi**  
Corresponding Secretary



**Mark Smullen**  
Affiliate Liaison



**Nicole Murphy**  
WOA Liaison



**Dana Kansa**  
AYP Liaison



**Robert Evans**  
Historian



**Joe Niedzielski**  
Board of Governors' Chair



# ANNUAL SPONSORSHIP

The Washington, D.C. Chapter of the American Society of Plumbing Engineers (ASPE) invites your organization to support our industry through annual sponsorship. Our chapter provides education, networking, and technical resources to plumbing professionals across the region. Sponsorship is a great way to promote your company, support our mission, and engage with key decision-makers in the field.

## PLATINUM SPONSORSHIP - \$3000

- Golf Foursome + Tee Marker
- Newsletter page (full page)
- Website link and logo
- 8 vouchers for technical meetings (1 per meeting)
- 2 tabletops at meetings throughout the year
- 1 tabletop at Industry Night
- 2 tickets to Winter Social/Special Event
- Ability to add swag to new member welcome bag
- Logo (huge) on banner displayed at each meeting/event
- Social Media spotlight throughout the year

## SILVER SPONSORSHIP - \$1000

- Newsletter page (quarter page)
- Website link and logo
- 2 vouchers for technical meetings (1 per meeting)
- 1 tabletop at meetings throughout the year
- Ability to add swag to new member welcome bag
- Logo (medium) on banner displayed at each meeting/event

## GOLD SPONSORSHIP - \$2000

- Golf Foursome
- Newsletter page (half page)
- Website link and logo
- 4 vouchers for technical meetings (1 per meeting)
- 1 tabletop at meetings throughout the year
- 1 tabletop at Industry Night
- 1 ticket to Winter Social/Special Event
- Ability to add swag to new member welcome bag
- Logo (large) on banner displayed at each meeting/event

## BRONZE SPONSORSHIP - \$500

- Newsletter page (quarter page)
- Website link and logo
- Ability to add swag to new member welcome bag
- Logo (small) on banner displayed at each meeting/event

## A LA CARTE

Golf Foursome + Tee Marker	\$750	1 ticket to Winter Social	\$50
Golf Foursome	\$650	1 ticket for technical meeting (member)	\$40
Golf Tournament - Sponsor a Hole	\$150	1 ticket for technical meeting (non-member)	\$50
Golf Tournament - Individual	\$175	Full page newsletter ad	\$750
1 tabletop at meeting	\$150	Half page newsletter as	\$500
1 tabletop at Industry Night	\$150	Quarter page newsletter as	\$250
		Newsletter page upgrade	\$250

## WHY SPONSOR?

- Direct visibility with plumbing engineers, designers, and contractors
- Brand recognition at our in-person and virtual events
- Support professional development and code education in your community

For more information, contact: [Chuck Potter](#) or [Joe Niedzielski](#)

# PRESIDENT REPORT

Dear ASPE DC Members,

February may be the shortest month of the year, but our chapter's momentum certainly hasn't slowed. As we move through the winter season, I want to thank each of you for your continued engagement, professionalism, and support of ASPE DC.

Our recent events and activities are a direct reflection of the strength of this chapter. Whether you've attended meetings, participated in socials, or simply stayed connected, your involvement is what keeps ASPE DC thriving. It's always encouraging to see both familiar faces and new members contributing to the exchange of knowledge and camaraderie that defines our organization.

Looking ahead, we have more opportunities to connect, learn, and enjoy time together. I encourage you to stay involved, invite colleagues, and take full advantage of what your membership offers. Strong participation not only benefits the chapter but also strengthens our industry network as a whole.

Thank you again for being part of ASPE DC and for the energy you bring to this community. I look forward to seeing many of you at our upcoming events.

## **IMPORTANT UPCOMING EVENTS!**

March 28 – [AYP Top Golf Event!](#)

\*Remember that your Chapter survives with your involvement in our events, activities, and meetings\*

As always, if anyone has any suggestions regarding ways to make our chapter better, or if there are any questions, please reach out to us via email: [president@aspedc.org](mailto:president@aspedc.org). Please try to spread the word to your friends and coworkers in the industry who may be interested in joining our chapter.

Cheers!

Chuck Potter, CPD, GPD, LEED Green Associate  
Department Head/Senior Plumbing Engineer  
Greenman-Pedersen, Inc  
President - ASPE DC Chapter



# Schedule of Meetings

<b>DATE</b>	Topic	Speaker
<b>SEPT 16</b>	Engineering Ethics And Dispute Resolution	Rebecca Bowman
<b>OCT 14</b>	Med Gas Design 101 and NFPA-99 Code Changes	Niki Patel
<b>NOV 18</b>	Hot Water Recirculation Systems	Engineer Presentation - Chuck Swope (Mueller)
<b>DEC 16</b>	Everything We Do Wrong	Panel - moderator, code reviewer, Contractor, Sr. Engineer
<b>JAN 27</b>	Industry Night	Local UA5
<b>FEB 17</b>	Rainwater Harvesting	Engineer Presentation - Dejan Tadic (Setty)
<b>MAR 10</b>	Fire Protection and Firefighting Operations	E.J. Henninger / PM Group
<b>APR 21</b>	Fire Protection	Ken Isman
<b>MAY 19</b>	Design Development	Engineer Presentation - Joe Niedzielski (2RW)

*If you have a specific topic, speaker, or case study you would like to see included in our program, please let us know. Likewise, if you or your firm would be interested in presenting at one of our sessions, we encourage you to share your availability.*

# VICE PRESIDENT- TECHNICAL REPORT

Greetings ASPE members,

Despite challenging weather conditions and a week-long delay, the joint meeting with the Plumbers & Gasfitters Local 5 proved to be a tremendous success. It was encouraging to see contractors and engineers come together to share industry achievements, discuss ongoing challenges, and gain a deeper appreciation for one another's day-to-day responsibilities. Opportunities like this strengthen cross-discipline collaboration and ultimately improve the way we deliver projects.

A special thank-you goes to Chris Biondi of Local 5 for his instrumental role in coordinating the event—particularly as the weather added unnecessary complications. His efforts ensured strong contractor participation and helped make the meeting both productive and well-rounded.

As we look ahead to our next program, I'm excited for attendees to explore the topic of rainwater harvesting and its practical applications. This session will be led by Setty & Associates' Dejan Tadic, CPD, who brings 18 years of design experience with a focus on sustainable and water-efficient systems. With sustainability playing an increasingly central role in our future projects, this discussion could not be more timely or relevant.

Tyler Simms, CPD, EIT  
Plumbing/Fire Protection  
CanonDesign  
VP Technical - ASPE DC Chapter



# CASINO

## Night

OH WHAT FUN!



# VICE PRESIDENT- MEMBERSHIP REPORT

Our ASPE DC Chapter continues to grow, and it's exciting to see new faces joining us at meetings and events each month. That momentum happens because of you — members who stay engaged and invite colleagues and friends to experience everything ASPE has to offer.

February brings several opportunities to learn, network, and enjoy time together. We kick things off with our February Chapter Meeting on February 17th at Pinstripes, featuring an Engineer Presentation on Rainwater Harvesting presented by Dejan Tadic (Setty). This session offers the opportunity to earn credits, expand your technical knowledge, and strengthen relationships with fellow industry professionals.

Just a few days later, join us for one of our most anticipated social events of the year - ASPE DC Casino Night on February 21st at the STH Training Facility. With classic casino games, networking, food, drinks, and prizes, this event is the perfect setting to invite a coworker, introduce someone new to the chapter, and enjoy time with peers in a relaxed, fun environment.

Membership in ASPE continues to provide tremendous value:

- Access to trusted technical resources and industry standards
- Opportunities to earn CEUs, PDHs, and continuing education credits
- Leadership and committee involvement that supports career growth
- A strong network of professionals who share knowledge and opportunities
- Events that combine professional development with meaningful connections

One of the best ways to strengthen our chapter is simple: invite someone new. Whether it's a coworker, a young professional, or a colleague who has been meaning to attend, bringing a guest helps grow our community and ensures the continued success of ASPE DC.

We look forward to seeing you this month, and hopefully, a few new faces you bring along. Let's keep the momentum going!

Michelle Stilley  
VP Membership - ASPE DC Chapter





*Proudly Representing Leading  
Plumbing and HVAC Manufacturers  
in the Mid-Atlantic Region Since 1982*

**MEET OUR SPECIFICATIONS TEAM**



**Cydney Johnstone**  
Southern Virginia  
[cydney@thejoyceagency.com](mailto:cydney@thejoyceagency.com)



**Michelle Stilley**  
DC Metro  
[michelle@thejoyceagency.com](mailto:michelle@thejoyceagency.com)



**Sepideh McQuay**  
Maryland  
[sepideh@thejoyceagency.com](mailto:sepideh@thejoyceagency.com)



**Troy Monteith**  
Specifications Manager  
[monteith@thejoyceagency.com](mailto:monteith@thejoyceagency.com)

**MANUFACTURERS WE REPRESENT**



# VICE PRESIDENT- LEGISLATIVE REPORT

Happy February

For this month's edition of the legislative section, we would like to discuss the ICC's 2024 International Plumbing Codes, in addition to Chapter 3:

305.8 Expansive soil.

**Where expansive soil is identified under buildings in accordance with Section 1803.5.3 of the International Building Code, but not removed in accordance with Section 1808.6.3 of the International Building Code, plumbing shall be protected in accordance with Section 305.8.1 or 305.8.2.**

What does this section mean, and how does it relate to the plumbing professional in the industry? While section 1803.5.3 of the IBC does define the test parameters of expansive soil, we will present the Federal Highway Administration, which states:

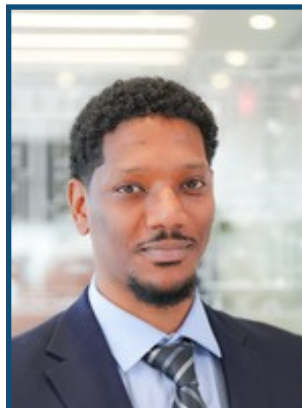
Swelling or expansive soils are susceptible to volume change (shrink and swell) with seasonal fluctuations in moisture content. The magnitude of this volume change is dependent on the type of soil (shrink-swell potential) and its change in moisture content. A loss of moisture will cause the soil to shrink, while an increase in moisture will cause it to expand or swell.

Expansive or swelling soil in the United States is a common occurrence; maps have been published showing estimated locations of expansive soil across the nation. It is the responsibility of design professionals to determine whether their project is in an area affected by soil expansion. Where expansion soil is removed (usually in localized areas with shallow layers), section 305.8 does not apply, and this section can be ignored.

Where expansive soil has not been excavated, and underground piping is to be installed, the expansion and consolidation of the soil will cause many issues, such as:

- Breaking of rigid piping.
- Vertical movement of rigid piping from desired locations.
- Leaking pipes cause soil movement, which can lead to building damage.
- Soil movement influences the slope of gravity drainage, leading to backups and damaged piping.
- Liability issues for plumbing professionals arising from changing conditions after piping installation.

Ameen Osman  
VP Legislative - ASPE DC Chapter



# VICE PRESIDENT- LEGISLATIVE REPORT

*continued...*

Repairs can be very costly and time-consuming for the building owner and may lead to litigation due to the high cost. Section 305.8 gives us two methods in sections 305.8.1 and 305.8.2, which state:

## 305.8.1 Nonisolated foundations.

Under foundations with slabs that are structurally supported by a subgrade, buried plumbing shall be permitted

Here, 305.8.1 allows for a modified approach to installing plumbing beneath slab-on-grade to limit the potential for vertical pipe movement. As the volume of the expansion soil changes, the slab and piping will adapt to it.

## 305.8.2 Isolated foundations.

Under foundations with a slab or framing that structurally spans over an under-floor space that isolates the slab or framing from the effects of expansive soil swelling and shrinking in accordance with Section 1808.6.1 of the International Building Code, the plumbing shall be suspended so that plumbing, hangers and supports are isolated, by a void space, from the effects of expansive soil swelling and shrinking.

Exception: Plumbing shall be permitted to be buried where it provides drainage of an under-floor space.

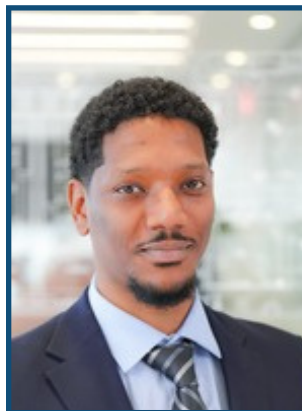
To protect the void space, soil shall be sloped, benched or retained in accordance with an approved design methodology. Plumbing, hangers and supports below the slab or framing shall not be permitted to be in contact with the soil or any assemblage of materials that is in contact with soil in the active zone. A slab and plumbing shall not be permitted to be lifted as an assembly to create the void space unless the under-floor space is a crawl space with access to allow inspection of plumbing after lifting.

Exception: Plumbing shall be permitted to be buried where it provides drainage of an under-floor space.

Organic materials subject to decay shall not be used for hangers, supports and soil retention systems. Materials subject to corrosion shall not be used for hangers, supports and soil retention systems unless protected in an approved manner. Where plumbing transitions to a buried condition beyond the perimeter of the foundation, an adequately flexible expansion joint shall be provided in the plumbing system to accommodate the effects of expansive soil swelling and shrinking.

Many manufacturers design products to comply with section 305.8.2. Below are some details to help with visualization.

Ameen Osman  
VP Legislative - ASPE DC Chapter



# VICE PRESIDENT- LEGISLATIVE REPORT

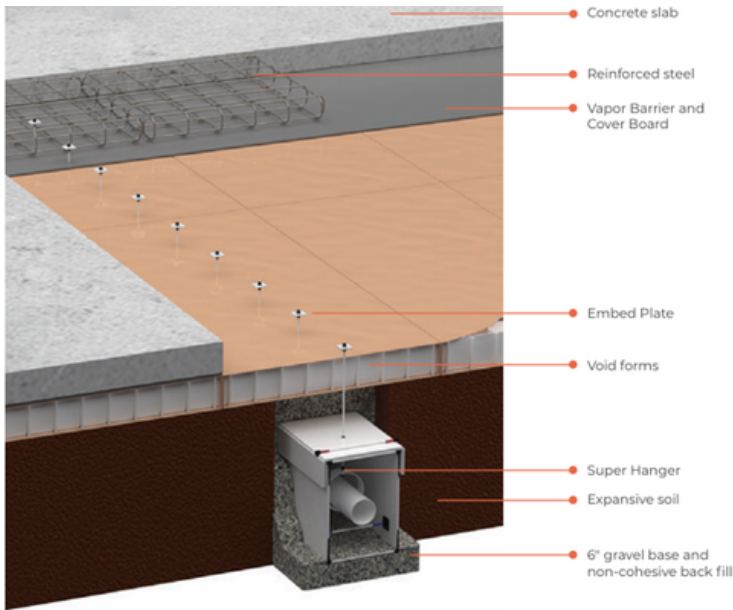


Figure 1

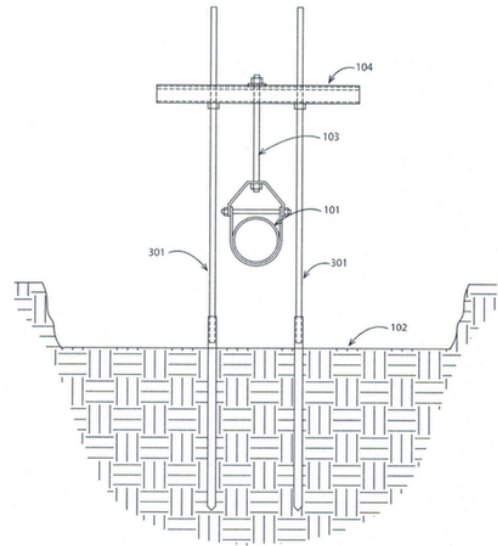


Figure 2

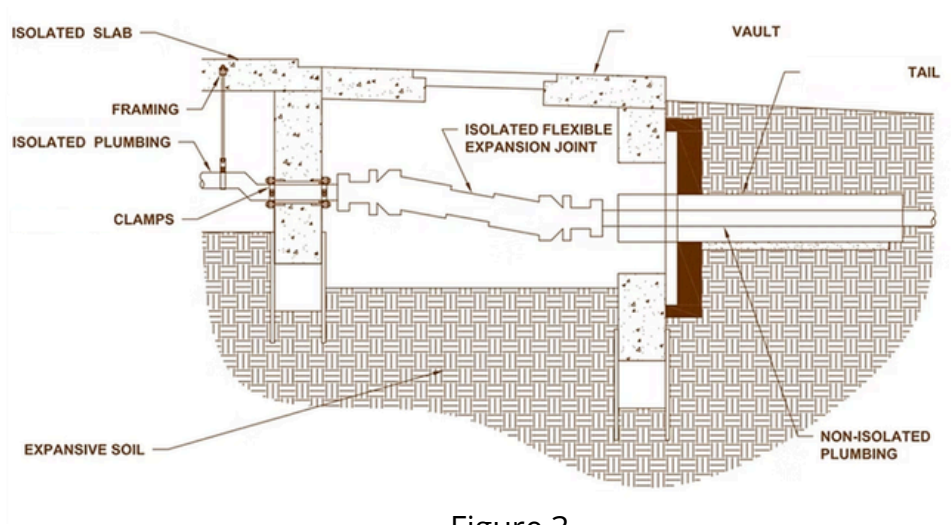


Figure 3

"It's not that I'm so smart, it's just that I stay with problems longer."  
-Albert Einstein-

Ameen Osman  
VP Legislative - ASPE DC Chapter





# TOPGOLF®

# CASPE

American Society of  
Plumbing Engineers™

## WASHINGTON, DC

*Invites you to our exclusive*

# ASPE DC Young Professionals Social

*Tee Up Your Network at Topgolf!*

*Who:*

*ASPE DC Young Professionals (typically 35 & under)*

*Students, EITs, designers, engineers, and industry professionals welcome*

*What:*

*A casual networking social with food, drinks, and Topgolf gameplay*

*No golf experience required!*

## Saturday, March 28, 3-6pm

Top Golf Loudoun

20356 Commonwealth Center Dr, Ashburn, VA 20147

<https://topgolf.com/us/loudoun/>

**REGISTER NOW**



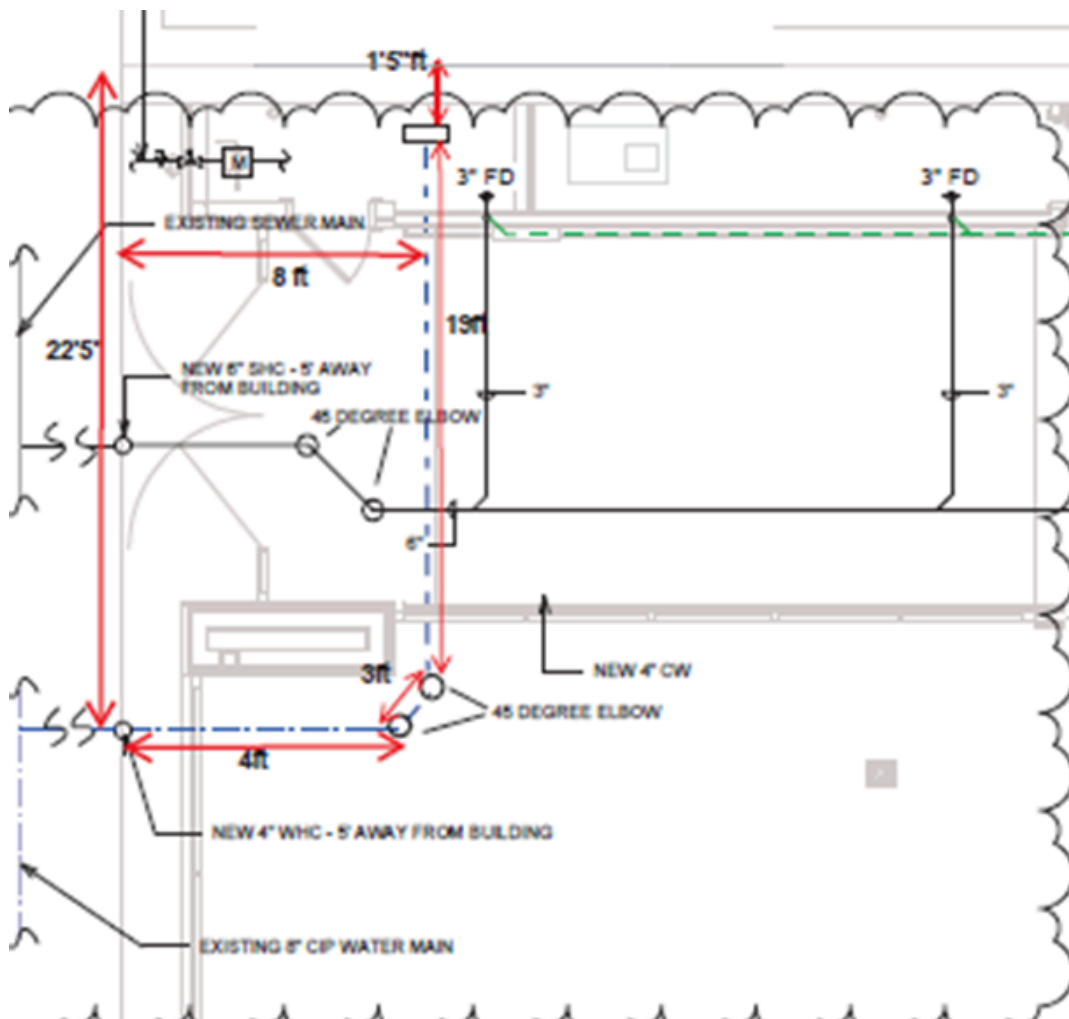
# PLUMBING PLANS REVIEWER'S CORNER

By  
David Bailey

Last month's review involves adding a breakroom sink to an existing warehouse space. The faucet specified has a 1.75 GPM flow rate per drawing note, or 1.80 GPM per on-line manufacturer's spec sheet. The problem was two-fold. The water heater kW was too low, and the flow rate of faucet was too high. The quick solution from a Plumbing Designer's point-of-view would be specifying a CM-40I-277 tankless water heater and a 1.0 GPM rated faucet. Also, since the faucet desired is a pull-down spray type, remember to equip the supplies with ASSE 1024 BFPs. Since the delta T has a potential of 76 degrees F, the water heater's thermostatic feature comes into play.

Again, WSSC Water has adopted the 2024 IPC, the 2024 IFGC, and the 2024 WSSC Water P&FGC effective December 1, 2025. All permit applications received by the Commission on or after that date shall result in the linked plan cases to be subjected to these new Codes. Please make sure that applicable drawing submissions are designed to meet or exceed these recent 2024 Code adoptions.

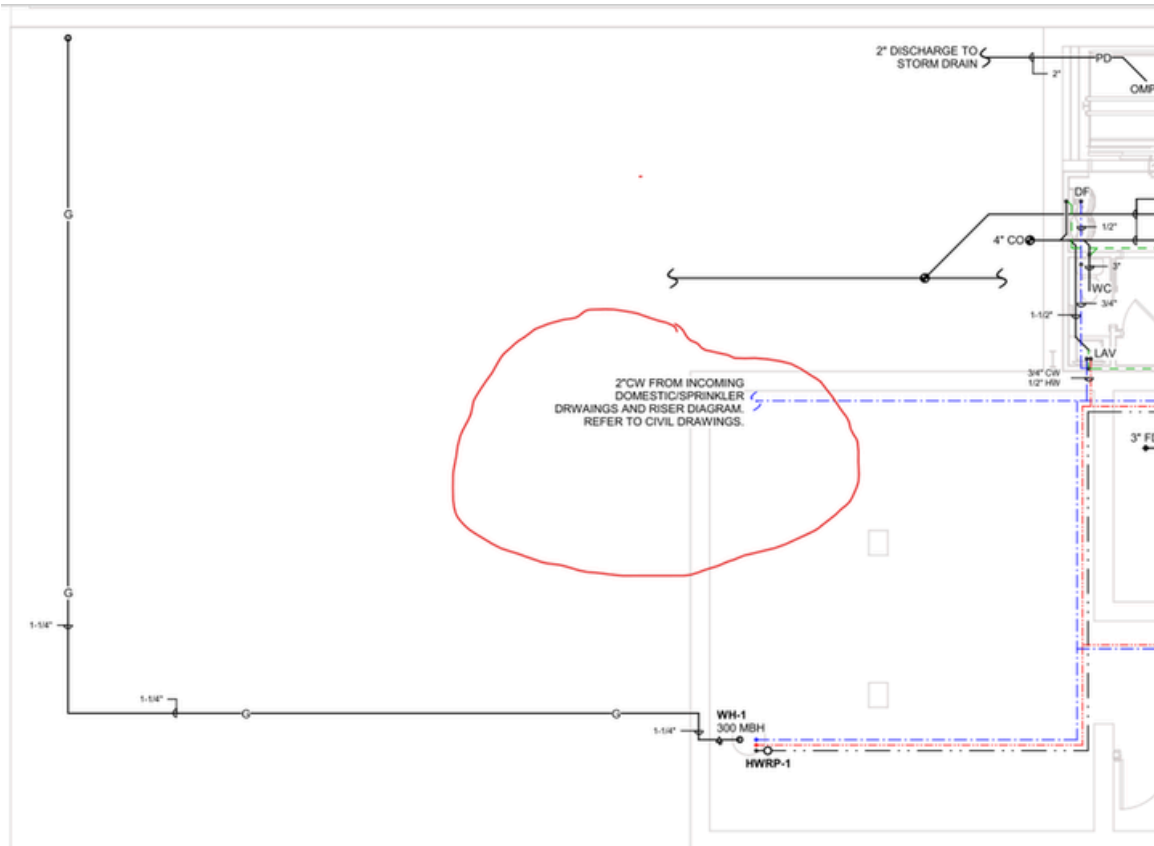
For this month's review, this is a result of an Inspector's citing, and a subsequent submission of a waiver request. As you can see (in the partial ground floor plan below), the combined water service proposed meanders over twenty-five feet underground within the structures envelope thereby exceeding the five-foot limit per Code. However, not just the 2021 WSSC Water P&FG Code, but the County's adoption of the NFPA.



# PLUMBING PLANS REVIEWER'S CORNER

continued

Thus, WSSC Water is unable to consider approving the waiver request until the County, the AHJ regarding NFPA matters, takes a decision. So, how is it that this was not caught during the review? The probable reason is that the proposed water service was not shown on the ground floor plan until this waiver request submission. Instead, the reviewer may have totally relied on the notation presented on the basement floor plan referencing the Civil Site Plan per part plan (presented on the next page) and never followed up with obtaining the drawing(s). It is on the basement plan I have discovered another Code violation. Can you see what is at issue? There is a key word in the previous paragraph that may be of some assistance.

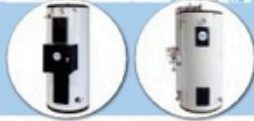


**Partial Bsmt Floor Plan**



**PVI INDUSTRIES:** [www.pvi.com](http://www.pvi.com)

ASME Water Heaters for all energy sources. AquaPLEX Duplex stainless steel tank, semi-instantaneous, instantaneous, flexible fuels, condensing boilers, digital mixing valves.



**HUBBELL WATER HEATERS:** [www.hubbellheaters.com](http://www.hubbellheaters.com)

ASME and Non-ASME water heaters. Electric, gas, steam and indirect. Cement lined tanks, hazardous locations, tepid water heating systems, RO/DI, heat pump water heating.



**LYNC:** [www.lyncbywatts.com](http://www.lyncbywatts.com)

Engineered System Solutions; Commercial Heat Pump Water heating, Packaged Water Heating Systems, and Hot Water Wellness Solutions.



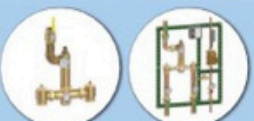
**AET ALTERNATE ENERGY TECHNOLOGIES:** [www.aetsolar.com](http://www.aetsolar.com)

Solar Water Heating Systems, complete drainback systems, flat panel solar collectors, engineering support.



**AMTROL:** [www.amtrol.com](http://www.amtrol.com)

ASME and non-ASME Expansion Tanks, Hydropneumatic Tanks, Storage Tanks, and Air Elimination Equipment



**LAWLER MANUFACTURING:** [www.lawlervalve.com](http://www.lawlervalve.com)

Thermostatic Mixing Valves for Domestic Water; manifold recirculation stations, Emergency Mixing Valves, Combination Temperature and Pressure Valves, Photographic Control Valves, thermostatic and Digital Mixing valves.



**STINGRAY SYSTEMS:** [www.tepid.com](http://www.tepid.com)

Emergency fixture and mixing valve solutions; eyewash, eye/face, shower only, combination stations, emergency mixing valves.



**THERMON MANUFACTURING:** [www.thermon.com](http://www.thermon.com)

Freeze Protection for Pipes, Control and Monitoring Systems, Roof and Gutter Deicing, Snow Melting and Floor Warming Cables, Domestic Hot Water Temperature Maintenance.



**HEATIZON:** [www.heatizon.com](http://www.heatizon.com)

Electric Snow Melting Systems, Electric Roof Deicing, Electric Slab Heating, Electric Radiant Floor Heating, Turn Key Electric Snow Melting Systems.



**FRIO:** [www.frio.co](http://www.frio.co)

Next generation heat trace controllers using IoT connectivity, innovative sensing, and advanced control methods to provide 24/7 advanced monitoring with automatic fault notification.



**REIMERS:** [www.reimersinc.com](http://www.reimersinc.com)

Electric steam boilers, electric hot water boilers, custom engineered skid packages, unvented blow off tanks, vented blowdown separators.



**TRICON FORCE PIPING SOLUTIONS:** [www.tfpiping.com](http://www.tfpiping.com)

Pre-Fabricated, Pre-Insulated Piping Systems, Secondary Containment and Conduit Piping Systems for Industrial and Commercial Applications.



Please contact **Jason Eagles** - [Jason@bayassociates.com](mailto:Jason@bayassociates.com)

10943 McCormick Rd, Hunt Valley, MD 21031

PHONE 410-825-6616 | FAX 410-825-6618 | [www.bayassociates.com](http://www.bayassociates.com)



# THE 36<sup>TH</sup> ANNUAL ASPE DC GOLF TOURNAMENT



## SAVE THE DATE

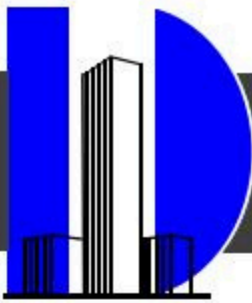
**17** SEPT  
2026

BLUE MASH GOLF COURSE  
5821 OLNEY LAYTONSVILLE RD  
LAYTONSVILLE, MD 20882

MARK YOUR CALENDAR.

WE INVITE YOU TO JOIN THE ASPE DC CHAPTER COMMUNITY FOR AN  
EXCEPTIONAL DAY OF GOLF. REGISTRATION DETAILS AND EVENT  
INFORMATION WILL BE PROVIDED IN THE COMING MONTHS.

For more information, contact: [Antrone Winkey](#).



## E. J. DWYER CO.












10910 Pump House Road – Annapolis Junction, MD 20701

Ned Dwyer – [ndwyer@ejdwyer.com](mailto:ndwyer@ejdwyer.com) – mobile 443-250-4275

### 1970-2025 - 55 YEARS OF PROFESSIONAL SERVICE

#### REPRESENTING

#### PRODUCT DESCRIPTION

	<b><u>AGS</u></b> <a href="http://americangassafety.com">americangassafety.com</a>	Laboratory, Kitchen, CO2, Gas detector UL approved valves & enclosures. Emergency Off Button w/ valve. Complete utility control for water. Merlin digital controller. <b>In stock!</b>
	<b><u>Aquarius Showers</u></b> <a href="http://aquariusproducts.com">aquariusproducts.com</a>	Residential & commercial. Acrylic and gel-Coat ADA compliant showers. <b>In stock!</b> Barrier free shower pans now available in stock. Tub replacement pans.
	<b><u>Bradley Corporation</u></b> <a href="http://bradleycorp.com">bradleycorp.com</a>	Washfountains, lavatory centers, Halo emergency fixtures, Repair Parts. <b>In stock!</b> Natural Quartz Evero, Verge, Advocate, Omni Deck, Washbar. Partitions, lockers, accessories. Digital Tempering Valves, Thermostatic Mixing Valves.
	<b><u>Chicago Faucet Company</u></b> <a href="http://chicagofaucets.com">chicagofaucets.com</a>	Quality faucets for office buildings, healthcare, education, laboratory, sensor faucets. Meet the no-lead laws with our E-cast products. CF Now! EQ stylish spouts with ASSE 1070 thermostatic mixing valve. EQ is the next generation of electronic faucets. Help in the fight against HAI's with our new BioArmor UV-C point of use LED technology.
	<b><u>Chicago Faucet Food Service</u></b> <a href="http://chicagofaucets.com">chicagofaucets.com</a>	Food service for your entire kitchen, restaurant needs. Full lines of back mount, deck mount styles with pre rinse, glass and pot fillers, faucets. Built in reliability. CF Now!
	<b><u>Chronomite Heaters</u></b> <a href="http://chronomite.com">chronomite.com</a>	Electric instantaneous hot water heaters from 0.2gpm to high capacity. Instant-Micro and Insta-temp digital mixer for multiple fixtures. Omni laminar flow controls. <b>In stock!</b>
	<b><u>Circuit Solver</u></b> <a href="http://circuitsolver.com">circuitsolver.com</a>	By ThermOmega Tech, inline valve eliminates time consuming balancing procedures. Thermostatic Balancing Valves to automatically deliver hot water to fixtures.
	<b><u>Comfort Design</u></b> <a href="http://comfortdesignsbathware.com">comfortdesignsbathware.com</a>	ADA compliant, tile finish and tub replacement fixtures. <b>In stock!</b> Shower pans, ADA pans, multi piece with solid surface finish. Asura trench drain. <b><u><a href="#">New integral trench drain with zero threshold shower systems.</a></u></b>
	<b><u>Filtrine Drinking Fountains</u></b> <a href="http://filtrine.com">filtrine.com</a>	Drinking water products with a tradition of highest quality craftsmanship. Bottle filling stations, chillers, UV purifiers. Taste Master Carbon filters with stainless housing.
	<b><u>Keltech Tankless Heaters</u></b> <a href="http://keltech-inc.com">keltech-inc.com</a>	<b>Tankless water heaters</b> , commercial, industrial, light industrial, emergency fixtures. Precision engineered quality tankless to meet your needs. 5kW to 144kW, ASME.
	<b><u>ThermOmega Tech</u></b> <a href="http://thermomegatech.com">thermomegatech.com</a>	Drain tempering valve – DTV – to add cold water to drain lines to meet code. The STV steam wash down station high temp mixing with hose and wash down gun. <b>Scald guard and freeze protection</b> valves for emergency fixtures.



# TOPGOLF®

# CASPE

American Society of  
Plumbing Engineers™

## WASHINGTON, DC

*Invites you to your exclusive*

# Affiliate Appreciation Night!

*Join us to celebrate our incredible affiliate members and all of their contributions to our growing chapter.*

## Thursday, April 16 @ 6:30pm

20101 Century Blvd, Germantown, MD 20874

<https://topgolf.com/us/germantown/>





**SHAFER, TROXELL & HOWE Inc.**

*Your Solutions Partner Since 1973*



## Representing:

Grundfos • Peerless •

PACO • Myers • Syncroflo •

Cougar Controls • Topp Industries •

Primex Controls • See Water



## Applications and Service Specialization:

Sump/Sewage Pump Stations • Water Booster Systems •

Fire Pump System • Rainwater Harvesting Systems •

Circulating Pumps • Water Filtration Systems



**Contact our Engineering Team**

800•233•7718 | [engineering@sthinc.com](mailto:engineering@sthinc.com)

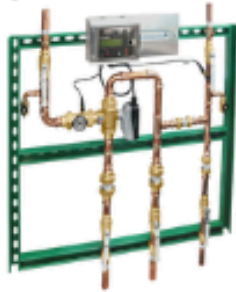
97 - D Monocacy Blvd. • Frederick, MD 21701 • [www.sthinc.com](http://www.sthinc.com)

Manufacturers Representative Since 1968

# Harry Eklof

Representing :: & Associates, Inc.

**CALEFFI**  
Hydronic Solutions



**FIELD CONTROLS**



**FLORESTONE**  
A spec above.



**SCAN THE QR-CODE**

to get more information  
on product and training!





Providing Award Winning Building Systems  
Engineering Services since 1966.

Mechanical • Electrical • Plumbing • Structural



[www.gpinet.com](http://www.gpinet.com)



# Women of ASPE®

## Learn more about our group!



Email [rrodriguez@aspe.org](mailto:rrodriguez@aspe.org) and visit [aspe.org](http://aspe.org)

Exclusive WOA Sponsor





# Read Learn **EARN**

Continuing education from the  
American Society of Plumbing Engineers

EARN CEUS!

Do you find it difficult to obtain continuing education units (CEUs)? Through this program on ASPE Education, ASPE can help you earn CEUs each month. Just go to [education.aspe.org/RLE](http://education.aspe.org/RLE), click on one of the monthly choices, read the article, and take the quiz, and you will instantly be awarded 0.1 CEU if you pass. You can take each monthly quiz to earn 1.2 CEUs each year.

Best of all, this program is FREE for ASPE members.

[education.aspe.org/RLE](http://education.aspe.org/RLE)



# ARE YOU RESPONSIBLE FOR DESIGNING MEDICAL GAS SYSTEMS?



## ASSE 6060



**March 16-20, 2026**

The final exam shall be completed by 1PM on March 20, 2026.



**8:00AM - 4:30PM**

Instruction shall be 32 hrs from Mon-Thurs. Exam shall be proctored on Friday morning.



**\$3,000**

Includes: NFPA 99 Code Book, Daily Continental Breakfast, Lunch and ASSE 6060 MGTC Credential



**Homewood Suites by Hilton**

7491 New Ridge Road  
Hanover, Maryland, 21076

If you are responsible for designing medical gas systems, read on to see why you should take this class!

**Nikita Patel, PE**  
**ASSE 6060**  
**570-899-9090**

**01**

### **Growing Healthcare Industry**

The healthcare industry is growing rapidly and designing a facility that meets code requirements and owner preferences will be made easier after completion of this course.

**02**

### **Code Requirements**

With the recent release of NFPA 99 2024, the ASSE 6060 is now one of the approved credentials for medical gas designers responsible for the sizing, selection, layout, and more for medical gas and vacuum systems.

**03**

### **Engaging the Facility AHJ**

As Designers and Engineers, I'm sure you've been asked to make decisions for a project that are the responsibility of the owner. This course helps you navigate those conversations to avoid bearing that responsibility as the designer.

**04**

### **Professional Growth**

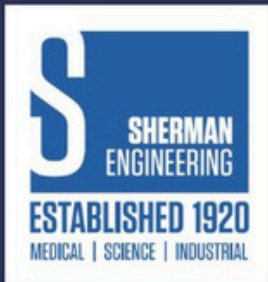
With this credential, you can seamlessly transition into medical gas design with minimal support from supervisors, helping you become a true medical gas design expert

**05**

### **Class + Credential**

Unlike other companies hosting this course, this class hosted by Sherman Engineering will include both the course led by Mark Allen, as well as the course exam, proctored by MGTC.

**REGISTER**



# ARE YOU RESPONSIBLE FOR DESIGNING COMPRESSED GAS AND VACUUM SYSTEMS?



## SINCE 1920, SHERMAN ENGINEERING

has been offering the optimum engineered vacuum and compressed gas systems in the Healthcare, Pharmaceutical, Chemical, Power, and General Industrial markets.

## OFFERING 24/7 EMERGENCY SERVICE

our factory trained and ASSE 6000 credentialed service technicians are available to manage preventative maintenance and emergency outages.

## QUESTIONS? CONTACT:

### Jordan Myers

1830 County Line Rd, Unit 303  
Huntingdon Valley, PA 19006  
jtmyers@shermanengineering.com  
267-222-2710

### 01

#### Vacuum Pumps

Liquid Ring, Rotary Vane, Rotary Claw, Rotary Screw, etc.

### 02

#### Compressors

Rotary Scroll, Rotary Screw, Rotary Tooth, Reciprocating, and more

### 03

#### Medical Gases

Medical Vacuum, Medical Air, Compressed Gas Manifolds, and Medical Gas Pipeline Equipment

### 04

#### Field Services

Medical Gas Verification, 24/7 Field Service Technicians, Installation Assistance, ASSE 6000 Training

### 05

#### Engineering Services

Custom solutions for compressed gases and vacuum. Medical gas design sizing and pipe layout

Scan the QR Code to visit our website





**PLUMBING**  
TECHNICAL SERVICES



**NOTHING PROTECTS LIKE GRAY**



Hari Patel  
Regional Manager  
Technical Services  
570.899.9413  
[hari.patel@mcwanepbgrp.com](mailto:hari.patel@mcwanepbgrp.com)



# Are you protecting mission-critical assets?

We understand your unique challenges!



**FIREFLEX**  
INTEGRATED FIRE PROTECTION SYSTEMS



Contact us:  
Mike R Nagy  
mnagy@fireflex.com  
647-468-5208  
fireflex.com

# Countless Solutions All Built to be the Best®



Residential and commercial solutions offering exceptional performance, efficiency, reliability and innovations, including Microban® antimicrobial technology inside all tank-type water heaters.



[Learn more](#)

  
**BRADFORD WHITE**  
WATER HEATERS  
Built to be the Best®

The  
JOYCE  
AGENCY

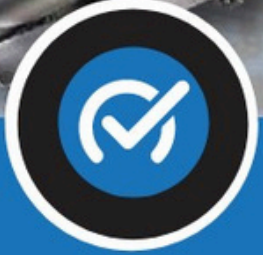


703-866-3111 | [www.thejoyceagency.com](http://www.thejoyceagency.com)

Microban® antimicrobial product protection helps prevent the growth of bacteria, mold and mildew that may affect the product. The built-in antimicrobial properties do not protect users or others from disease-causing organisms. Microban® is a registered trademark of Microban Products Company. ©2025, Bradford White Corporation. All rights reserved.



# ASSOCIATED MECHANICAL EQUIPMENT SUPPLIERS



AMES, Inc. is a manufacturer's representative of water and wastewater treatment, pumping, and HVAC equipment. We serve the municipal, commercial, and industrial markets in Delaware, Maryland, Northern Virginia, West Virginia, and District of Columbia.

## PRODUCT OFFERINGS:

- Overwatch Direct Inline Pumping System
- Pumps
- Controls
- Water & Wastewater
- Packaged Systems
- Rainwater & Water Reuse
- Grease/Interceptor

## PARTS & SERVICES

- New Construction Field Service
- Warranty & Repair
- Maintenance Contracts
- Parts & Aftermarket Sales

**PARTNERING  
WITH THE  
INDUSTRY'S  
PREMIER  
BRANDS**



8918 Herman Drive | Columbia, MD 21045  
www.amesinc.com | info@ames.com



**HOW CAN WE HELP?**  
**410.995.6971**

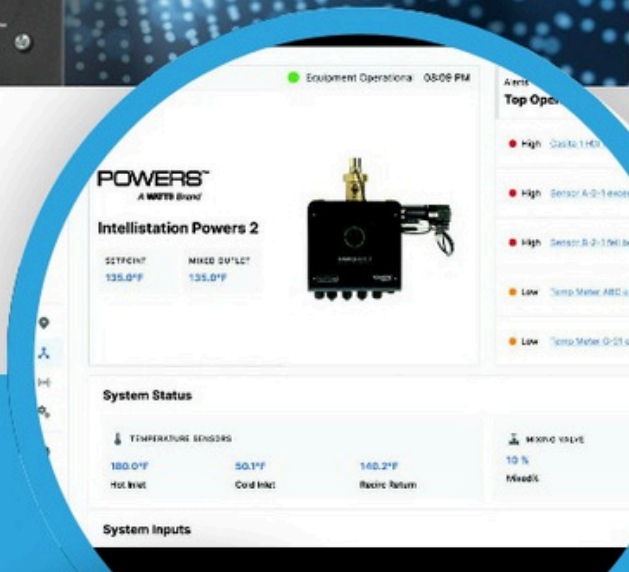


# THE NEXT GENERATION OF DIGITAL MIXING

## Temper Water. Not Expectations.

### Key Features:

- Improved temperature control with Globe Valve Design
- Sensor package options to fit any application
- Improved touchscreen with screen swipes
- Full temperature monitoring and pressure/flow rate monitoring options



**IntelliStation 2** performance data can be viewed from anywhere and tracked over time for trends that can help optimize your system and anticipate issues. This next generation mixing valve can be monitored and controlled remotely via **Nexa** or your BMS, and doesn't require factory preprogramming, a laptop, or special software when commissioning or making or adjustments.



nexaplatform.com



703-866-3111 | [www.thejoyceagency.com](http://www.thejoyceagency.com)



# Highland Tank®

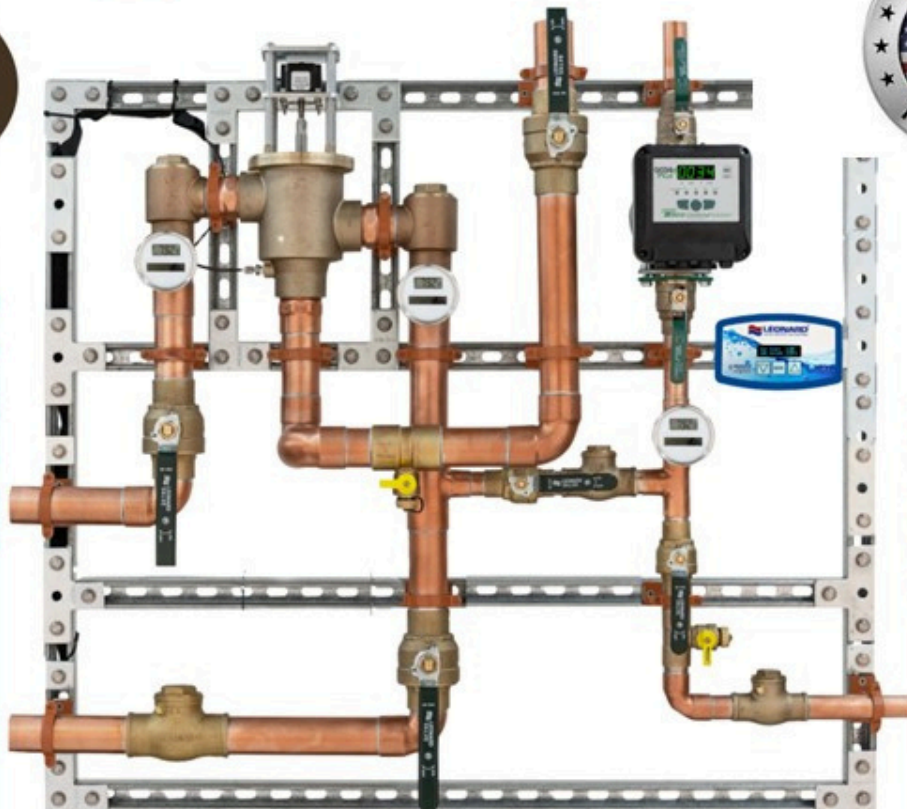
Unmatched Quality and Service



Grease Interceptors  
 Water Tanks & Systems  
 Elevator Oil Interceptors  
 Oil/Water Separators  
 ASME Pressure Vessels

Contact:  
 Michael VanLenten  
 mvanlentenjr@highlandtank.com  
 814-254-8896

[www.highlandtank.com](http://www.highlandtank.com) | 814.893.5701



**Viega, LLC - Mike McCarthy:**

**Technical Manager (571) 328-1143**

**mike.mccarthy@viega.us**

*Viega Questions? Lunch & Learn sessions, project support & specification review.*



**viega**

**HIGH PERFORMANCE.  
ENHANCED PROTECTION.**

**THAT'S**

**EDGE HP IRON™**



Charlotte Pipe and Foundry's Edge HP Iron pipe and fittings are designed for aggressive DWV applications. This specially coated cast iron provides enhanced protection for environments such as hospitals, commercial kitchens, soda fountains, casinos, and more. The electrocoating process prevents delamination, delivering cutting-edge performance every time.

**CHARLOTTE**  
PIPE AND FOUNDRY COMPANY

Find out more at [CharlottePipe.com/Edge](http://CharlottePipe.com/Edge)



Commercial Water

Kevin Brace  
Senior Specification Specialist  
Kevin.Brace@Rheem.com



Represented by the following Manufacturer's Representatives in Maryland, DC and VA



Duhart Co.  
Eric Woody  
[Ericwoody@duhartco.com](mailto:Ericwoody@duhartco.com)  
[www.duhartco.com](http://www.duhartco.com)



Duhart Co.  
Eric Woody  
[Ericwoody@duhartco.com](mailto:Ericwoody@duhartco.com)  
[www.duhartco.com](http://www.duhartco.com)



The Joyce Agency  
Michelle Stilley  
[Michelle@thejoyceagency.com](mailto:Michelle@thejoyceagency.com)  
[www.thejoyceagency.com](http://www.thejoyceagency.com)



Harry Eklof & Associates  
Nicole Murphy  
[nmurphy@harryeklof.com](mailto:nmurphy@harryeklof.com)  
[www.harryeklof.com](http://www.harryeklof.com)

# CONNECT for SUCCESS



**SCHIER**  
LIFETIME GUARANTEED  
GREASE INTERCEPTORS



Made in the USA

Fast Pitch<sup>®</sup>  
riser system



703-866-3111 | [www.thejoyceagency.com](http://www.thejoyceagency.com)

Hydronic | Steam | Metering

Premium HVAC, plumbing, and hydronic products for commercial and industrial use.

# HPS

— SPECIALTIES —

[www.hpsspec.com](http://www.hpsspec.com)



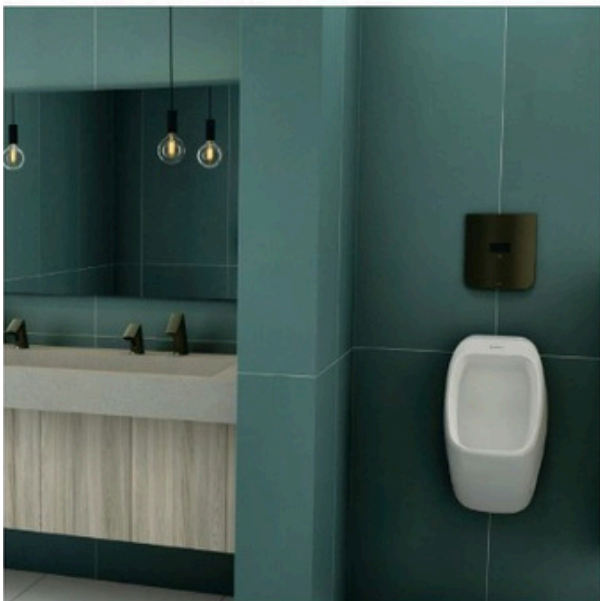
## HPS

SPECIALTIES

— A FERGUSON COMPANY —

### FERGUSON

# 301-483-0562



SENSING  
THE FUTURE  
OF THE  
RESTROOM.  
TODAY

Shown above: ST-2469 Water Closet with CX-8158 Flushometer in Graphite, Sloan® XLERATOR® EHD-501 Hand Dryer in Graphite, Designer Series™ DSG-83000 Gradient® Sink with laminated cabinet-style vertical enclosure, BASYS® EFX-250 Faucet and ESD-500 Soap Dispenser in Graphite, SU-7419 Designer Urinal with CX-8198 Flushometer in Graphite

# SLOAN®

Water Connects Us®

Learn more at [sloan.com/touch-free](http://sloan.com/touch-free)



703-866-3111 | [www.thejoyceagency.com](http://www.thejoyceagency.com)

# IS YOUR WATER SYSTEM READY?

Represented by:  
**YATES**  
 SINCE 1949  
 1-800-878-8181  
 chyates@nyates.com  
 info@nyates.com

## MULTI-BARRIER BACTERIAL SOLUTIONS



**seccua**  
 German Hollow-Fiber  
 Membrane Technology



- 99.999% removal of Legionella and pathogens (3rd party verified)
- A firewall for the entire building
- Drastic reductions in nutrients and biofilms
- 500 GPM+, minimal pressure loss
- Self-cleaning, long-lasting, low maintenance
- Automatic membrane integrity verification (Meets strict EPA guidelines)

Removing microorganisms *before* they enter and improving disinfectant efficacy.

## HIGH-CAPACITY ULTRAFILTRATION



- Point-of-Entry
- Point-of-Use
- Recirculation
- Supplemental Disinfectants



### HEADQUARTERS & WAREHOUSE

10915 McCormick Rd, Hunt Valley, MD 21031  
 Phone – 800.878.8181 | Fax – 888.667.9201

**COLMAC**  
 WATERHEAT  
A division of Colmac Industries.



**Taco**

**YATES**  
 SINCE 1949

- A.O. Smith Water Heaters
- Colmac Heat Pump Water Heaters
- Holby Valves
- Taco™ 006e3 Circulators



**AC Smith.**

PLEASE VISIT NYATES.COM FOR MORE INFORMATION.



The UL approved Spencer Gas Cube is perfect for boosting natural gas pressure to meet your customers specifications.

With over 120 years of experience, Spencer Turbine is an industry leader in gas handling equipment.



**SPENCER GAS CUBE**



*Represented locally by:*

**T|C|Koester**

T.C. Koester, Inc. since 1968

(610) 828 - 0951

[www.tckoester.com](http://www.tckoester.com)

Proud ASPE Member

**CONNECT**  
for  
**SUCCESS**



# ASPE YOUNG PROFESSIONALS®

# Hey YOUNG PROFESSIONALS!

Sponsored by:



## Learn more about our group!



## Don't Cut Corners on Data Center Protection

Reliable preaction systems provide effective fire protection while mitigating the chance of unintentional water discharge.



Featuring single and double interlock preaction configurations, the time and field proven **Model DDX** latching clapper valve sets the standard for the industry.



*FM  
Approved  
as a factory  
assembled  
and tested  
unit.*

Now available with an integrated South-Tek Systems N<sub>2</sub>-Blast® Nitrogen Generator, the **Model DDX PrePaK™** provides a compact "plug and play" cabinet-enclosed preaction system.



The durable link design of the **KFR Series** standard spray quick-response sprinkler makes it the ideal choice to help mitigate unintended sprinkler discharge.

Reliable's Product Technology Team brings over 350 years of combined fire protection industry experience. Contact us to discuss how Reliable products can benefit your projects:

**Call 800-557-2726 or email [tech@reliablesprinkler.com](mailto:tech@reliablesprinkler.com)**

N<sub>2</sub>-Blast® is a trademarks of South-Tek Systems, LLC.

[reliablesprinkler.com](http://reliablesprinkler.com)

# Reliable®

# CASPE

American Society of  
Plumbing Engineers™

WASHINGTON, DC

THANK YOU  
TO OUR ANNUAL SPONSORS

## PLATINUM



## GOLD



## SILVER



## BRONZE



ON BEHALF OF THE ASPE WASHINGTON, DC CHAPTER, WE SINCERELY THANK YOU FOR YOUR CONTINUED SUPPORT AS AN ANNUAL SPONSOR. YOUR PARTNERSHIP IS VITAL TO THE SUCCESS OF OUR CHAPTER AND ALLOWS US TO PROVIDE VALUABLE TECHNICAL PROGRAMS, NETWORKING OPPORTUNITIES, AND PROFESSIONAL DEVELOPMENT TO OUR MEMBERS.